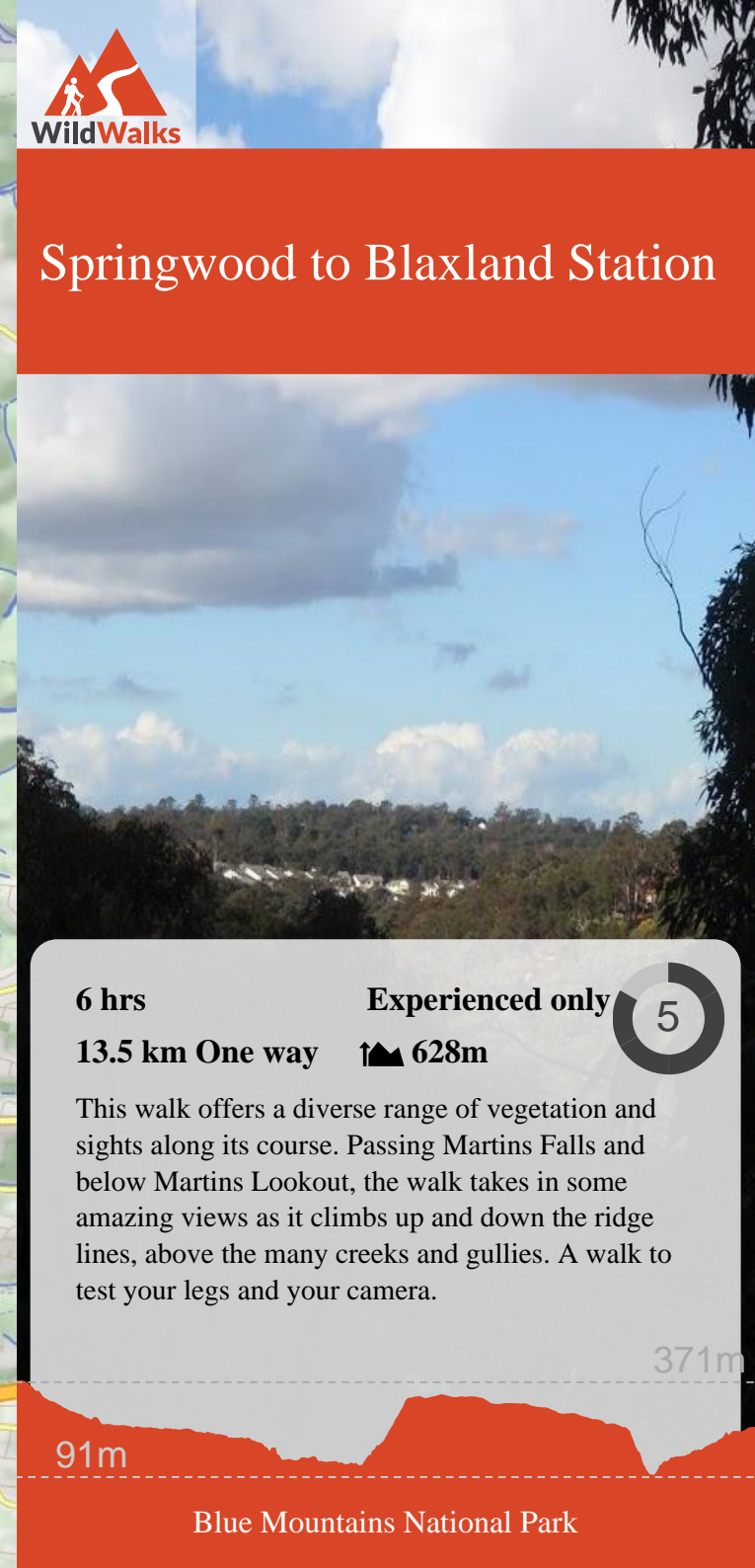
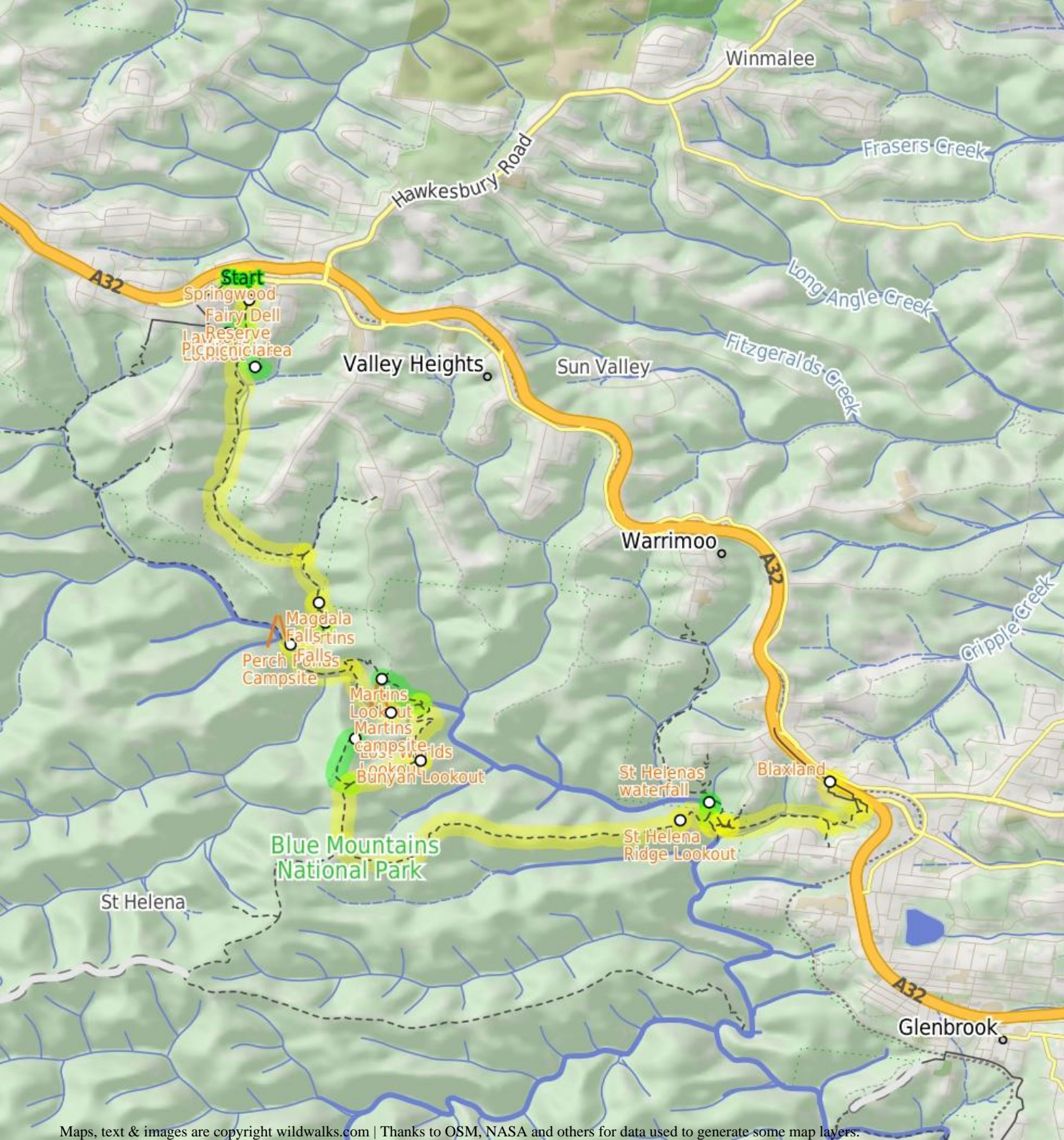


Springwood to Blaxland Station



6 hrs

Experienced only

5

13.5 km One way

628m

This walk offers a diverse range of vegetation and sights along its course. Passing Martins Falls and below Martins Lookout, the walk takes in some amazing views as it climbs up and down the ridge lines, above the many creeks and gullies. A walk to test your legs and your camera.

91m

371m

Blue Mountains National Park

Springwood

Springwood, along the Great Western Highway, is the second largest town in the Blue Mountains. Springwood also takes the title for the oldest railway station in the Blue Mountains. There are a variety of shops in Springwood, with quite a few cafes, bakeries and two historic hotels. Springwood was named by Governor Macquarie, when his wife and he stopped for water from a deep glen spring, in 1815. It seems aptly named, with many springs and creeks leading away from the ridge at Springwood, including Sassafra Gully, Magdala Creek and Glenbrook Creek. [More info.](#)

Fairy Dell Reserve picnic area

Fairy Dell Reserve picnic area is a quiet and shady terraced garden at the head of the Magdala Gully. Fairy Dell is situated just south of Springwood in the Lower Blue Mountains. The picnic area has numerous tables, parking and a grassy area for the kids to play. The Fairy Dell Reserve Picnic area is also the starting point for a number of walks down to Magdala Creek, Picnic Point and nearby Lawson Lookout.

Picnic Point

Picnic Point, in Springwood, Blue Mountains, is a quiet, grassy clearing tucked behind the houses above Magdala Creek. The area has a gazebo, picnic table and water tank (water needs to be treated). The clearing has a track leading down to many popular walks, with Lawson's Lookout and Fairy Dell Reserves nearby.

Lawsons Lookout

Lawsons Lookout, in Springwood, Blue Mountains, is an unfenced rockshelf overlooking the wonderful Magdala Creek valley. The lookout is most easily accessed from Raymond Rd.

Magdala Falls

Magdala Falls is a disappointing set of falls. The view from the steep hillside doesn't show any of the falls, but instead lets you hear the water cascade into the pool below. A red-stained rock above the pool can be seen through the dense foliage of the trees.

Before You walk

Bushwalking is fun and a wonderful way to enjoy our natural places. Sometimes things go bad, with a bit of planning you can increase your chance of having an enjoyable and safer walk. Before setting off on your walk check

- 1) Weather Forecast ([BOM Central Tablelands District](#))
- 2) Fire Dangers ([Greater Sydney Region](#))
- 3) Park Alerts ([Blue Mountains National Park](#))
- 4) Research the walk to check your party has the skills, fitness and equipment required
- 5) Agree to stay as a group and not leave anyone to walk solo

Think before you TREK

The 'Think before you TREK' program developed by NSW Police & NPWS promotes the benefits of planning ahead for your bushwalking trip by using an easy to remember acronym:

- T** Take adequate supplies of food, water, navigation and first aid equipment.
- R** Register your planned route and tell friends and family when you expect to return.
- E** Emergency beacon (PLB's) should be carried on walks with significant gaps in mobile coverage (check terrain profile).
- K** Keep to your planned route and follow the map and walking trails.

Topo Maps

The maps provided on wildwalks are helpful, but there are times where you may need maps covering a broader area. Maps that cover this walk include;

1:25 000 Map Series:90304S SPRINGWOOD, 90303N PENRITH

1:100 000 Map Series:9030 PENRITH

Grade

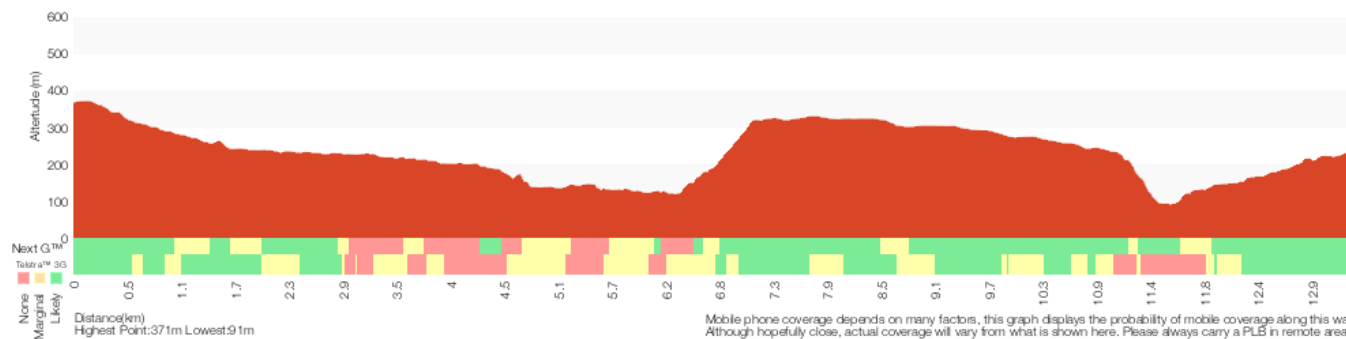
This walk has been graded using the AS 2156.1-2001. The overall grade of the walk is determined by the highest classification along the whole track.



Grade 5/6
Experienced only

Length	13.5 km One way
Time	6 hrs
Quality of track	Rough unclear track (5/6)
Signs	No directional signs (5/6)
Experience Required	Moderate level of bushwalking experience recommended (4/6)
Weather	Storms may impact on navigation and safety (3/6)
Infrastructure	No facilities provided (5/6)

* This walk passes through very remote areas and sections have no visible track. At least one person in your group should have training and experience in off track walking and navigation. Even with these notes and a GPS these extra skills and equipment are required.



Are you ready to have fun?

Please ensure you and your group are well prepared and equipped for all possible hazards and delays. Check park closures, weather information and Fire Danger Rating before setting out. Optional side trips and alternate routes noted are not included in this walk overall grade, length or time estimate. Please allow extra time for resting and exploring areas of interest. The authors, staff and owners of wildwalks take care in preparing this information but will not accept responsibility for any inconvenience, loss or injury you may experience. Please take care, have fun - Happy Walking. **Experianced walkers only: This walk passes through very remote areas and sections have no visible track. At least one person in your group should have training and experience in off track walking and navigation. Even with these notes and a GPS these extra skills and equipment are required.**

Getting there You can get to Springwood Station (gps: -33.6991, 150.5638) by car, train or bus. Car: There is free parking available.

You can get back from Blaxland Station (gps: -33.7438, 150.6099) by car or bus. Car: There is free parking available.

Find up to date and more information including; travel directions, weather, park closures and walker feedback at <http://wild.tl/stbs>

0 | Springwood

Springwood, along the Great Western Highway, is the second largest town in the Blue Mountains. Springwood also takes the title for the oldest railway station in the Blue Mountains. There are a variety of shops in Springwood, with quite a few cafes, bakeries and two historic hotels. Springwood was named by Governor Macquarie, when his wife and he stopped for water from a deep glen spring, in 1815. It seems aptly named, with many springs and creeks leading away from the ridge at Springwood, including Sassafras Gully, Magdala Creek and Glenbrook Creek. [More info.](#)

0 | Springwood Station

(270 m 5 mins) From Springwood Station, the walk crosses the road at the pedestrian crossing and turns left. The walk continues past the shop front for about 150 metres before turning right at a quadrangle, which leads the walk down through a car park. The walk passes through the car park and crosses Macquarie Rd, to the 'Fairy Dell' sign.

0.27 | Int. Springwood Ave and Fairy Dell Reserve

(150 m 3 mins) Continue straight: From the 'Fairy Dell, 49 Springwood Ave' sign, the walk heads downhill into the reserve (along the smaller road), past the signs. The walk winds down past the units (on the left) to the bottom of the road. The walk continues on the left side of the cul-de-sac, to a grassy area with picnic tables.

0.41 | Fairy Dell Reserve picnic area

Fairy Dell Reserve picnic area is a quiet and shady terraced garden at the head of the Magdala Gully. Fairy Dell is situated just south of Springwood in the Lower Blue Mountains. The picnic area has numerous tables, parking and a grassy area for the kids to play. The Fairy Dell Reserve Picnic area is also the starting point for a number of walks down to Magdala Creek, Picnic Point and nearby Lawson Lookout.

0.41 | Fairy Dell Reserve picnic area

(390 m 9 mins) Veer left: From the picnic area, the walk follows the 'Sassafras Gully' sign down the stairs. The walk quickly passes the vandalised building (which has since been reported as demolished by another walker), then a map sign before meeting a creek. The walk keeps the creek on the right and soon comes to a bridge with direction signs.

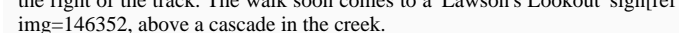
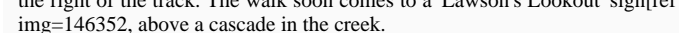
0.8 | Optional sidetrip to Picnic Point

(160 m 6 mins) Turn right: From the intersection, the walk crosses the bridge, following the 'Picnic Point' signs. The walk immediately climbs many stairs which wind up to a picnic shelter and grass area of Picnic Point. At the end of this side trip, retrace your steps back to the main walk then Turn right.

0.8 | Picnic Point

Picnic Point, in Springwood, Blue Mountains, is a quiet, grassy clearing tucked behind the houses above Magdala Creek. The area has a gazebo, picnic table and water tank (water needs to be treated). The clearing has a track leading down to many popular walks, with Lawson's Lookout and Fairy Dell Reserves nearby.

0.8 | Int. Fairy Dell and Picnic Point Tracks

(140 m 3 mins) Continue straight: From the intersection at the bridge, the walk heads in the direction of the 'Perch Ponds' arrow, keeping the creek on the right of the track. The walk soon comes to a 'Lawson's Lookout' signrefimg=146352, above a cascade in the creek.

0.94 | Optional sidetrip to Lawsons Lookout

(410 m 11 mins) Turn left: From the intersection, the walk follows the direction of the 'Lawsons Lookout' signs, up the hill. The track heads up to a rocky outcrop, where the track turns back on itself and steps through some bushes to the rocky surface of the lookout. At the end of this side trip, retrace your steps back to the main walk then Turn left.

0.94 | Lawsons Lookout

Lawsons Lookout, in Springwood, Blue Mountains, is an unfenced rockshelf overlooking the wonderful Magdala Creek valley. The lookout is most easily accessed from Raymond Rd.

0.94 | Int. Lawsons Lookout Trk and Fairy Dell Trk

(3.2 km 1 hr 7 mins) Continue straight: From the intersection, the walk follows the direction of the 'Perch Ponds' sign, keeping the creek on the right. The track crosses the creek many times, passing a number of caves. The track passes a burnt 'Perch Ponds' sign as it crosses a creek to immediately come to an intersection (with arrows engraved in the rocks).

Turn right: From the intersection, the walk follows the arrows engraved in the rock, keeping the creek to the right. The walk winds down the hillside then crosses the creek, continuing to follow the creek (now on the left) to a 'Magdala Falls' sign.

4.18 | Magdala Falls

Magdala Falls is a disappointing set of falls. The view from the steep hillside doesn't show any of the falls, but instead lets you hear the water cascade into the pool below. A red-stained rock above the pool can be seen through the dense foliage of the trees.

4.18 | Int. Magdala Ck and Magdala Falls trks

(300 m 7 mins) Continue straight: From the intersection, the walk keeps the creek on the left as it heads down the gully. The walk winds down the hill, passing a few rock overhangs as it leads to a 'Martins Lookout' sign.

4.47 | Optional sidetrip to Behind Martins Falls

(30 m 1 mins) Turn left : From the intersection, the walk heads to the left of the 'Martins Falls' sign (towards the falls). The walk skirts around the edge of the valley, coming under the rock overhang of the falls, and then arriving behind the falls. At the end of this side trip, retrace your steps back to the main walk then Turn left.

4.47 | Martins Falls

Martins Falls are at a rock overhang on Magdala Creek, near Springwood, almost 400m upstream from the Glenbrook Creek junction. The water falls

off a rock platform, over the overhang into a large pond. There is a faint track leading behind the falls, giving a different perspective of the pond and falls - extra care is required. This is a lovely area to enjoy the cool temperatures on warmer days, and is more spectacular after recent rain.

4.47 | Int. Martins Falls and Magdala Ck trks

(380 m 10 mins) Continue straight: From the 'Martins Falls' intersection, the track heads up a small hill, then downhill with the creek on the left. The walk meanders above the creek for a short time then opens out onto the 'Perch Ponds' campground clearing.

4.86 | Perch Ponds Campsite

Perch Ponds is a lovely waterhole, with a clearing suitable to pitch a tent, located at the junction of Magdala Creek and Glenbrook Creeks. The meeting of the two creek provides a relaxing sound of rushing water and a cool spot to rest on warmer days. The campsite is a flat area above the pool marked with a fire scar. A great shady and quiet area for a camp. There are no facilities and water from the creek needs to be treated.

4.86 | Perch Ponds camping area

(1.2 km 27 mins) Turn left: From the intersection, the walk follows the direction of the 'Martins Lookout' sign across the campground clearing to an arrow bolted to a tree. The walk follows this arrow down the hill and across the creek, and then follows creek, keeping it on the right. The walk leads up the hill away from the creek to a signposted intersection for 'Martins Lookout'.

Veer right: From the intersection, the walk follows direction of the 'Long Track' sign, down the hill. The track winds down near the creek and passes a sandy beach access before soon entering a second clearing.

6.03 | Martins campsite

Martins campsite is an unofficial camping area beside Glenbrook Creek. The camping area is a sandy clearing, opposite cliffs on the other bank. The camping area is situated below Martins Lookout, with Bunyan Lookout up the ridge on the opposite hillside. A quiet and shaded location which can give a great night's sleep.

6.03 | Martins camping area

(230 m 6 mins) Turn left: From the fireplace, the walk heads along the creek bank, keeping the creek near and on the right. The walk then tends left, up the hill to the intersection and pole without a sign.

6.26 | Optional sidetrip to Martins Lookout

(530 m 26 mins) Veer left: From the intersection, the walk heads up the stairs and soon begins zigzagging up the hillside for a short time, coming to be under a cliff line. The track heads up stairs which head through the cliffs and winds steeply up to the next set of stairs. The track heads under many wonderful rock overhangs, as it winds its way using stairs to come up to Martins Lookout. At the end of this side trip, retrace your steps back to the main walk then Turn left.

6.26 | Martins Lookout

Martin's Lookout is an unfenced view on the rim of the plateau, south of Valley Heights. There are views across and up the Glenbrook Creek, and to the Lost Worlds lookout (on the opposite cliffs) which features a small white crucifix. This cross is in memory of Rev. Raymer who was an avid bushwalker in the area. The plaque in the rock at Martin's Lookout is directly opposite this cross.

6.26 | Int. Martins Lookout and Bunyan Lookout Trk

(960 m 38 mins) Veer right: From the intersection, the walk follows the

'Bunyan Lkt' post down the stairs. The walk soon meets the creek and turns left, following the creek for a short distance before crossing at an opening in the shrubs around the creek. From here, the walk follows the cairns (rock stacks) across creek flats before climbing the hill to the base of a small cliff line. At one point beneath the cliff line, the walk ducks through a hole in the rock, then winds up through boulders, following more cairns. The walk continues up the hill, passing through a few more rocky outcrops to reach the informal, unfenced Bunyan Lookout, in a clearing near the cliff line.

7.22 | Bunyan Lookout

Bunyan Lookout is an large, unfenced sandstone platform overlooking the Glenbrook Creek valley. Behind the lookout, there is a small sandy clearing, big enough for a few tents. The lookout spans across Glenbrook Creek and sandstone cliffs of the valley.

7.22 | Bunyan Lookout

(570 m 10 mins) Turn sharp right: From Bunyan Lookout, the walk heads back into the clearing behind the unfenced cliff line and turns left at the cairn (if you head down into the valley, you have gone the wrong way). The walk meanders through the heath for a short time before coming to a red painted stump, on the right of the track.

7.78 | Optional sidetrip to Lost Worlds Lookout

(570 m 11 mins) Turn right: From the red stump intersection, the walk follows the 'Lost Worlds' sign up the small hill. The walk winds through the bush for a short time then crosses a rocky surface. The track then leaves the rocky surface briefly to return to a similar rock surface with a white crucifix on the edge of the cliff. At the end of this side trip, retrace your steps back to the main walk then Turn right.

7.78 | Lost Worlds Lookout

Lost Worlds Lookout is a cliff edge marked by a cross. The cross commemorates the Rev. Raymer who was a prominent bushwalker in the area, and has been commemorated by a plaque at Martins Lookout across the valley. The lookout views Glenbrook Creek valley below, the surrounding cliffs and down to Penrith in the west.

7.78 | Int. Bunyan Lookout Trk and Lost Worlds Trk

(590 m 10 mins) Continue straight: From the intersection, the walk heads in a southerly direction away from the red stump, keeping it behind on the right of the track. The walk winds through the bush, crossing a few sandy areas that lead to a small cairn marking the intersection, on the left of the track.

8.37 | Int. Bunyan Lookout Trk and St Helena Trk

(2.8 km 49 mins) Veer left: From the intersection, this walk heads south east along track soon leading downhill. The walk meanders through the heath for quite some time. The walk nears a cliff line on the left, which it continues near for a short time before opening out onto a rocky outcrop with a view across to houses on the opposite hill (just before the steep downhill section).

11.18 | St Helena Ridge Lookout

St Helena Ridge Lookout, does not have the clearest view or the most spectacular scenery. However, it is a great place to rest before continuing on your way.

11.18 | St Helena Ridge Lookout

(360 m 18 mins) Continue straight: From St Helena Ridge lookout, the walk follows a very faint track initially very steeply down off the rock platform. The track initially tends a little to the left to then follow the main ridge line down. The track soon becomes much less steep (and a little clearer) when after about 100m the faint track bends right at another rocky outcrop. Here

the walk leads off the side of the ridge to then wind down through the rocky outcrops and continue down through the scrub for about 180m until just before Glenbrook Creek where this walk comes to an un-signposted intersection.

11.53 | Optional sidetrip to St Helena waterfall

(160 m 3 mins) Veer left: From the intersection, the walk heads upstream, keeping the creek on the right. The track undulates along the bank, passing a few large boulders in the creek before coming to a sandy beach at a bend in the creek.

Continue straight: From the beach, the walk heads across the sand bar (covered in reeds) to come within ear-shot of the waterfall, located behind the inlet on the creek. The walk passes through the sandy, shallow section of the creek then walks up the bank and around to the waterfall. At the end of this side trip, retrace your steps back to the main walk then Continue straight.

11.53 | St Helenas waterfall

St Helenas waterfall is a small fall, flowing from a side creek into Glenbrook Creek. It is rather unimpressive unless there has been recent rainfall. The water cascades down a nice rock face, among the sassafras trees and mossy rocks.

11.53 | Int. Waterfall and ridge trk

(1.4 km 34 mins) Turn right: From the intersection, the walk heads downstream, keeping the creek on the left. After approximately 10m, the walk comes to a bushy creek crossing and winds over the rocks and through the bushes. Following this, the walk keeps the creek on the right whilst winding downstream. The track soon arrives at an intersection, which is a sandy area with rocks and stairs leading up the hill.

Turn left : From the large boulder, this walk heads up the hill and climbs the stone steps steeply, with a number of pink ribbons marking the initial track. The track continues steeply (eroded in places) up the hill and winds its way up to the un-signposted T-intersection.

Turn sharp right: From the intersection, this walk heads along the mostly flat track along the side of the hill, keeping the valley to your right. Soon the track leads to another intersection at the base of more stone steps, and a rock wall (on the left) that has 'Florabella Pass' engraved in it.

Continue straight: From the intersection, the walk heads around the boulder (which is on the left) and soon meets a set of stairs, to the left of a 'Pippas Pass' sign in a tree.

Turn right: From the intersection, this walk follows the 'Pippas Pass' sign (that is about 2m up a tree) gently downhill along the track, directly away from the rockface, keeping the main valley to your right. The track winds along the side of the hill for about 100m to then climb up a set of sandstone steps just past a shallow sandstone overhang. From here the track gently undulates along the side of the hill (with a steep valley to your right) for about 300m to lead gently down and cross the usually small creek in the shaded valley. Just after crossing this creek, the track bends left to head gently up through the valley along the base of a few natural sandstone walls for about 200m, where the the track becomes rocky and starts to climb a bit more steeply. The track then leads up through a cleft in the rock then about 60m later comes to a unsignposted three-way intersection (with the track on the left crossing the creek), marked with a smooth bark Angophora.

Turn left: From the intersection, this walk crosses the sandstone platform and creek. Here the track winds gently uphill for about 40m to cross a smaller often dry creek where the track continues uphill for another 30m to pass a graffitied sandstone overhang (on your left). The track continues gently uphill and bends right to cross a sandstone rock platform and small creek to almost immediately come to a faint intersection with a track in the tall heath. Here the walk turns left and heads uphill for for about 50m where the track then leads up some steps to come to the base of a sandstone cliff and smaller

overhang. Here the track bends left and and continues along the side of the hill for another 15m to pass a larger and more graffitied sandstone overhang. From here the track continues to wind more steeply uphill for about 80m before turning left and following a wider track (away from the houses) and into the lower car park of Blaxland library just past the 'Bushcare site' information sign. Here this walk turns right to head up to the library and main car park.

12.93 | Blaxland Library Carpark

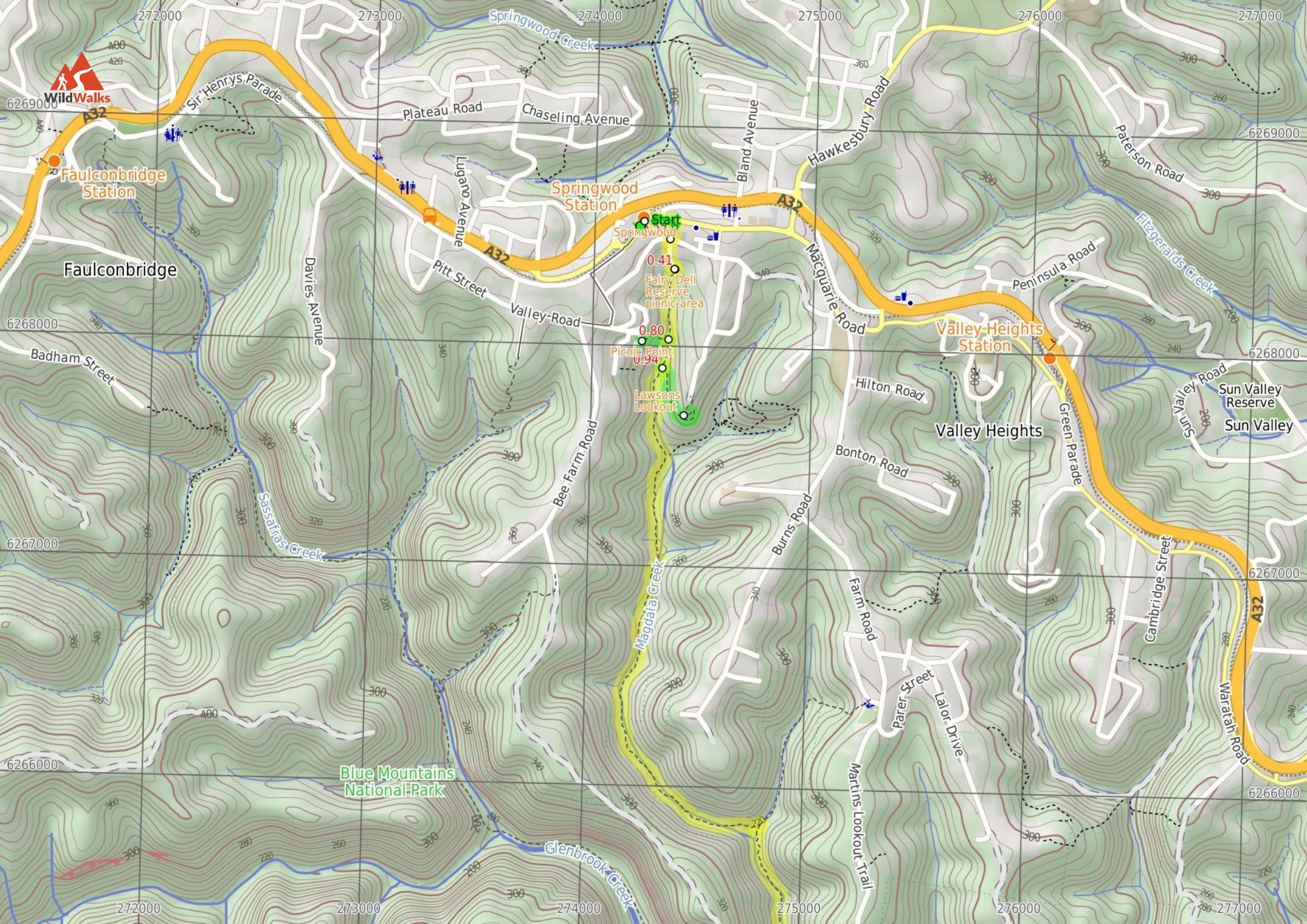
(460 m 9 mins) Turn left: From the Blaxland Library car park, this walk heads up the ramp on the side of the building then follows the back deck behind the library and community centre. On the far side of the building, this walk follows the bitumen footpath uphill to turn left at the 'Blaxland Civic Centre' sign onto the footpath beside Hope St. This walk follows the footpath uphill for about 150m before turning right to cross Hope St at the traffic calming device. Here the walk bends left and crosses a car park entrance, then soon turns right into 'Station St'. Here the walk heads up the footpath to cross another car park entrance then onto the pedestrian lane way that leads between the buildings, under the foot bridge to the main footpath, just before the Great Western Highway, among the Blaxland shops.

13.39 | Blaxland

Blaxland, found along the Great Western Highway, is one of the larger towns of the Lower Blue Mountains. The town has a number of shops and petrol station all lining the highway which lies between the town and train station. Wascoe was the original name of Blaxland until 1914 when it was renamed after Gregory Blaxland who was one of the explorers who found the route across the mountains for the colony . The Blaxland community hosts a number of events during the month of September. [More info.](#)

13.39 | Blaxland Shops

(70 m 1 mins) Turn left: From the footpath, the walk uses the stairs or ramp to climb onto the pedestrian bridge. The walk then crosses the bridge over the Great Western Highway and then heads down onto Blaxland Station.



WildWalks
Faulconbridge Station

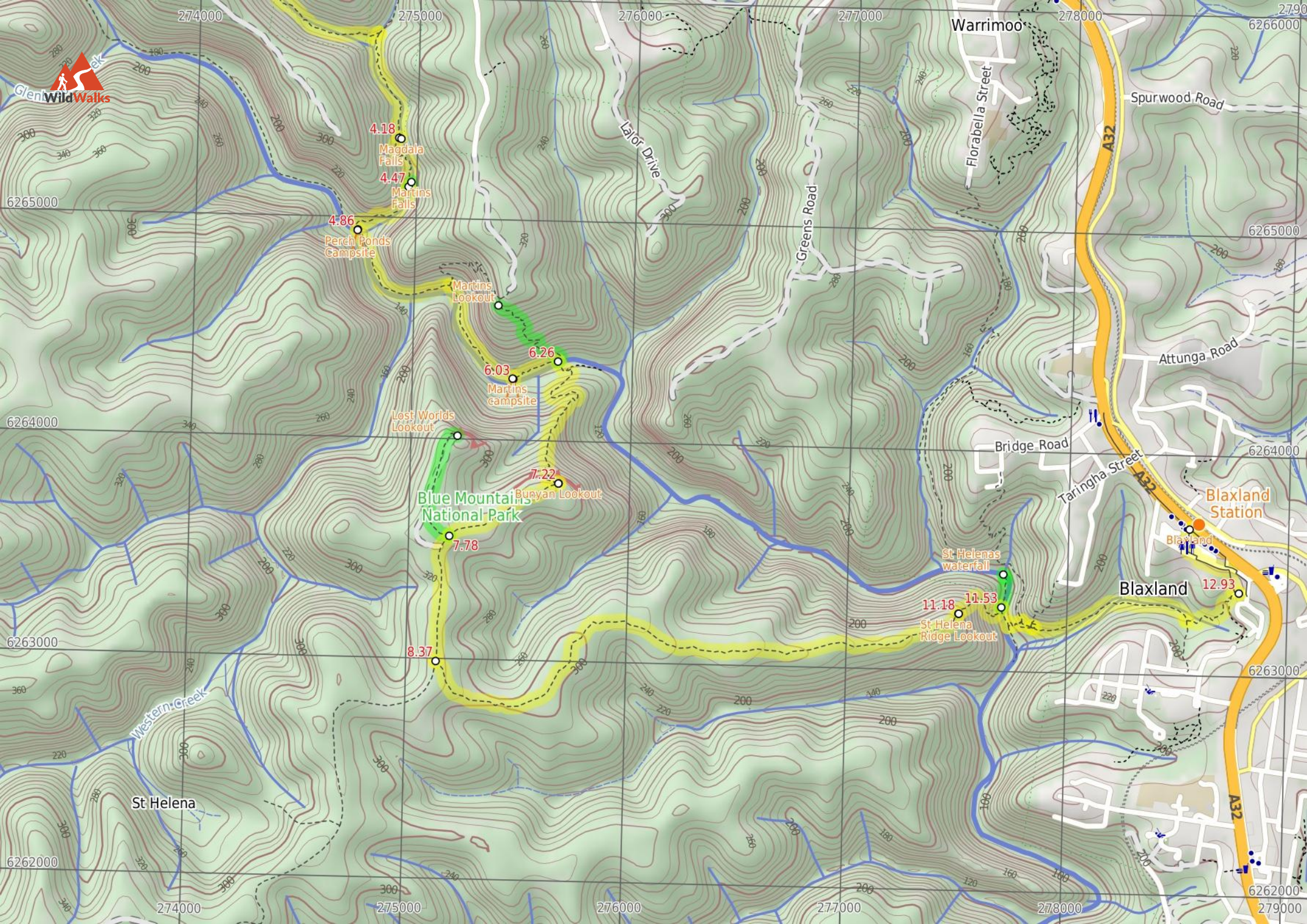
Springwood Station

Valley Heights Station

Start
0.41
Fairy Dell Reserve picnic area
0.80
Picnic Point
0.90
Lawsons Lookout

Blue Mountains National Park

Sun Valley Reserve
Sun Valley



Summary navigation sheet for the Springwood to Blaxland Station



km	From	Up/Dwn	Length	Initial directions (Use full tracknotes and maps for more detail)
Start	Springwood Station -33.6991,150.5638 (GR Springwood, 742685)	4 -11	270 m 5 mins	From Springwood Station, the walk crosses the road at the pedestrian crossing and turns left.
0.27	Int. Springwood Ave and Fairy Dell Reserve -33.6996,150.5653 (GR Springwood, 743685)	0 -21	150 m 3 mins	Continue straight: From the 'Fairy Dell, 49 Springwood Ave' sign, the walk heads downhill into the reserve (along the smaller road), past the signs.
0.41	Fairy Dell Reserve picnic area -33.7009,150.5655 (GR Springwood, 744683)	5 -44	390 m 9 mins	Veer left: From the picnic area, the walk follows the 'Sassafras Gully' sign down the stairs.
0.80	Int. Fairy Dell and Picnic Point Tracks -33.7037,150.5652 (GR Springwood, 743680)	33 -2	160 m 6 mins	Optional sidetrip to Picnic Point. Turn right: From the intersection, the walk crosses the bridge, following the 'Picnic Point' signs.
0.80	Int. Fairy Dell and Picnic Point Tracks -33.7037,150.5652 (GR Springwood, 743680)	1 -13	140 m 3 mins	Continue straight: From the intersection at the bridge, the walk heads in the direction of the 'Perch Ponds' arrow, keeping the creek on the right of the track.
0.94	Int. Lawsons Lookout Trk and Fairy Dell Trk -33.7049,150.5649 (GR Springwood, 743679)	39 -11	410 m 11 mins	Optional sidetrip to Lawsons Lookout . Turn left: From the intersection, the walk follows the direction of the 'Lawsons Lookout' signs, up the hill.
0.94	Int. Lawsons Lookout Trk and Fairy Dell Trk -33.7049,150.5649 (GR Springwood, 743679)	92 -181	3.2 km 1 hr 7 mins	Continue straight: From the intersection, the walk follows the direction of the 'Perch Ponds' sign, keeping the creek on the right.
4.18	Int. Magdala Ck and Magdala Falls trks -33.7279,150.5706 (GR Springwood, 749654)	13 -25	300 m 7 mins	Continue straight: From the intersection, the walk keeps the creek on the left as it heads down the gully.
4.47	Int. Martins Falls and Magdala Ck trks -33.7299,150.5711 (GR Springwood, 750651)	1 -2	30 m 1 mins	Optional sidetrip to Behind Martins Falls. Turn left : From the intersection, the walk heads to the left of the 'Martins Falls' sign (towards the falls).
4.47	Int. Martins Falls and Magdala Ck trks -33.7299,150.5711 (GR Springwood, 750651)	14 -63	380 m 10 mins	Continue straight: From the 'Martins Falls' intersection, the track heads up a small hill, then downhill with the creek on the left.
4.86	Perch Ponds camping area -33.7317,150.5686 (GR Springwood, 747649)	51 -67	1.2 km 27 mins	Turn left: From the intersection, the walk follows the direction of the 'Martins Lookout' sign across the campground clearing to an arrow bolted to a tree.
6.03	Martins camping area -33.7378,150.5762 (GR Springwood, 755643)	13 -14	230 m 6 mins	Turn left: From the fireplace, the walk heads along the creek bank, keeping the creek near and on the right.
6.26	Int. Martins Lookout and Bunyan Lookout Trk -33.7371,150.5784 (GR Springwood, 757644)	180 -2	530 m 26 mins	Optional sidetrip to Martins Lookout. Veer left: From the intersection, the walk heads up the stairs and soon begins zigzagging up the hillside for a short time, coming to be under a cliff line.
6.26	Int. Martins Lookout and Bunyan Lookout Trk -33.7371,150.5784 (GR Springwood, 757644)	222 -25	960 m 38 mins	Veer right: From the intersection, the walk follows the 'Bunyan Lkt' post down the stairs.
7.22	Bunyan Lookout -33.7421,150.5785 (GR Springwood, 757638)	18 -7	570 m 10 mins	Turn sharp right: From Bunyan Lookout, the walk heads back into the clearing behind the unfenced cliff line and turns left at the cairn (if you head down into the valley, you have gone the wrong way).
7.78	Int. Bunyan Lookout Trk and Lost Worlds Trk -33.7442,150.5731 (GR Springwood, 752636)	20 -13	570 m 11 mins	Optional sidetrip to Lost Worlds Lookout. Turn right: From the red stump intersection, the walk follows the 'Lost Worlds' sign up the small hill.
7.78	Int. Bunyan Lookout Trk and Lost Worlds Trk -33.7442,150.5731 (GR Springwood, 752636)	4 -10	590 m 10 mins	Continue straight: From the intersection, the walk heads in a southerly direction away from the red stump, keeping it behind on the right of the track.
8.37	Int. Bunyan Lookout Trk and St Helena Trk -33.7493,150.5724 (GR Springwood, 751630)	9 -122	2.8 km 49 mins	Veer left: From the intersection, this walk heads south east along track soon leading downhill.
11.18	St Helena Ridge Lookout -33.7474,150.5981 (GR Springwood, 775633)	4 -122	360 m 18 mins	Continue straight: From St Helena Ridge lookout, the walk follows a very faint track initially very steeply down off the rock platform, The track initially tends a little to the left to then follow the main ridge li...

Summary navigation sheet for the Springwood to Blaxland Station



km	From	Up/Dwn	Length	Initial directions (Use full tracknotes and maps for more detail)
11.53	Int. Waterfall and ridge trk -33.7472,150.6002 (GR Springwood, 777633)	4 -6	160 m 3 mins	Optional sidetrip to St Helena waterfall. Veer left: From the intersection, the walk heads upstream, keeping the creek on the right.
11.53	Int. Waterfall and ridge trk -33.7472,150.6002 (GR Springwood, 777633)	150 -28	1.4 km 34 mins	Turn right: From the intersection, the walk heads downstream, keeping the creek on the left.
12.93	Blaxland Library Carpark -33.7466,150.6118 (GR Springwood, 788634)	28 -9	460 m 9 mins	Turn left: From the Blaxland Library car park, this walk heads up the ramp on the side of the building then follows the back deck behind the library and community centre.
13.39	Blaxland Shops -33.744,150.6094 (GR Springwood, 786637)	0 0	70 m 1 mins	Turn left: From the footpath, the walk uses the stairs or ramp to climb onto the pedestrian bridge.